

L150



- ▶ Large vacuum flow
- ▶ Compact size and light weight compared to conventional mechanical pumps
- ▶ Short evacuation time
- ▶ Good for handling porous materials or if leakage is present

Supplied with vacuum gauge and manometer.

Technical data

Description	Unit	Value
Feed pressure, max.	MPa	0.7
Noise level, with silencer	dB(A)	64-78
Temperature range	°C	-20-80
Weight	g	4100-4600
Material		Al, PPS, NBR, SS

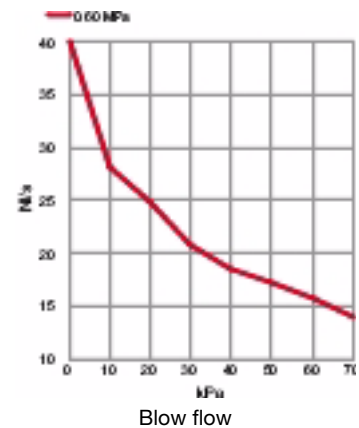
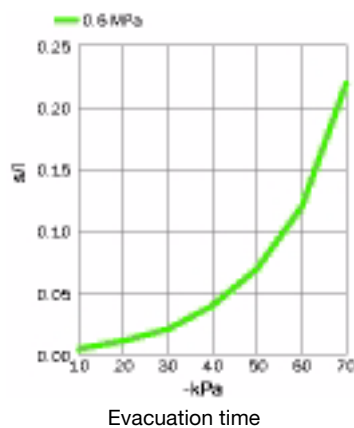
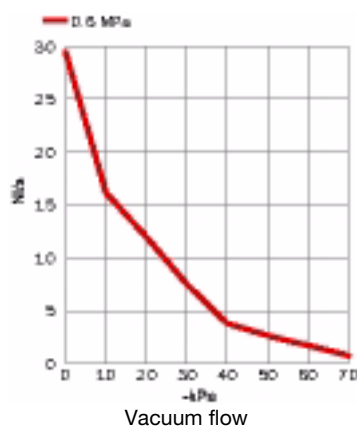
Feed pressure MPa	Air consumption NI/s	Vacuum flow (NI/s) at different vacuum levels (-kPa)										Max vacuum -kPa
		0	10	20	30	40	50	60	70	80	90	
0.60	10.5	29	16.2	12.0	7.5	3.8	2.7	1.7	0.76			75

Evacuation time

Feed pressure MPa	Air consumption NI/s	Evacuation time (s/l) to reach different vacuum levels (-kPa)										Max vacuum -kPa
		10	20	30	40	50	60	70	80	90		
0.60	10.5	0.005	0.012	0.021	0.040	0.070	0.12	0.22			75	

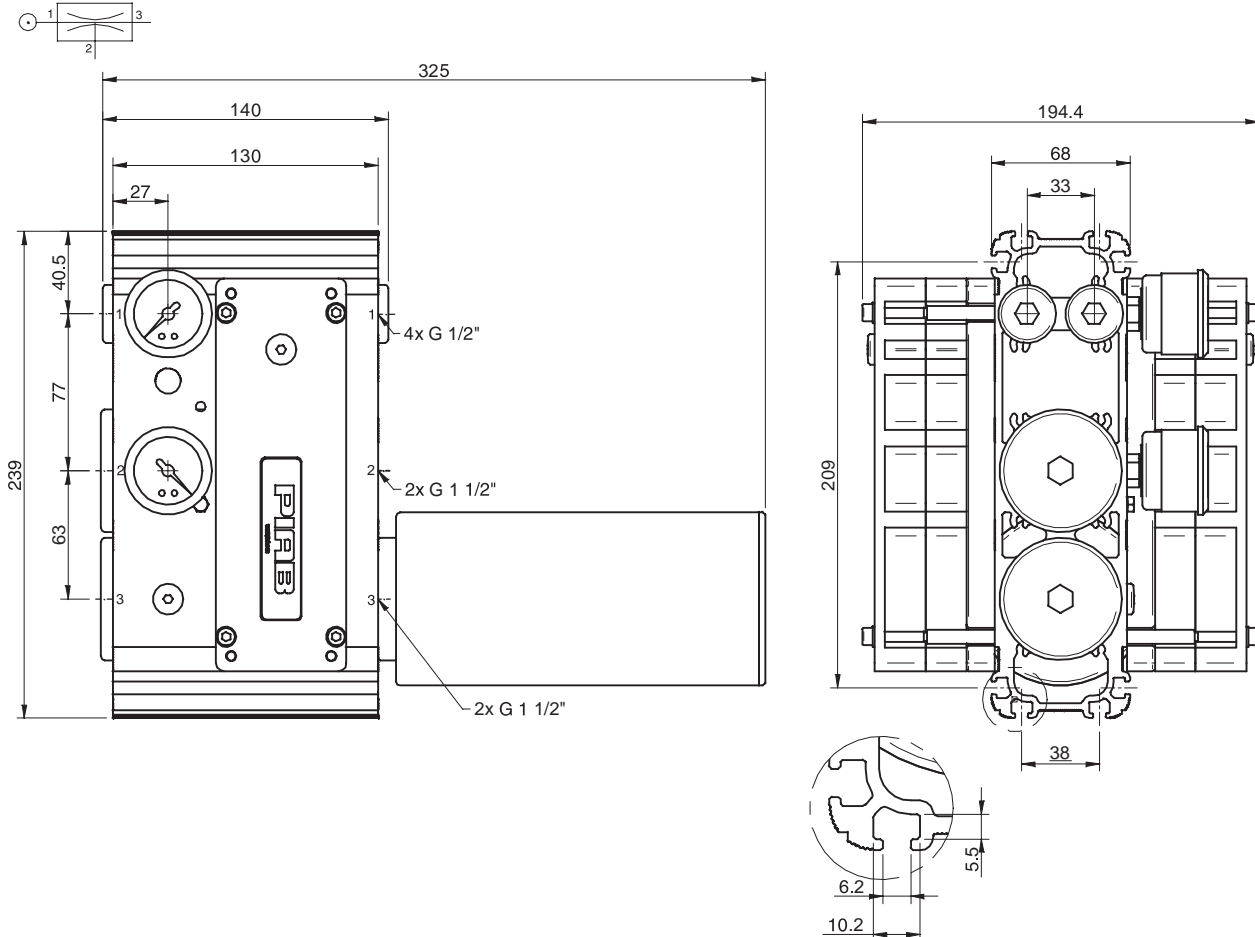
Blow flow

Feed pressure MPa	Air consumption NI/s	Blow flow (NI/s) at different pressure levels (kPa)										Max pressure kPa
		0	10	20	30	40	50	60	70			
0.60	10.5	40.0	28.0	24.7	20.7	18.4	17.3	15.8	13.9	70		



Ordering information

Description	Art. No.
Vacuum pump CLASSIC MP L150, conn. V, NBR sealings	0103622
Vacuum pump CLASSIC MP L150, conn. V, NBR sealings, complete with mounting brackets and silencer	0104138



Classic MP

Ordering information, accessories

Description	Art. No.
Sealing kit CLASSIC MP, NBR	0104634

For CLASSIC MP 150–240 1x 0104634, for CLASSIC MP 300–480 2x 0104634. The sealing kit includes flap valves, gaskets, compressed-air filters and O-rings.

L200



- ▶ Large vacuum flow
- ▶ Compact size and light weight compared to conventional mechanical pumps
- ▶ Short evacuation time
- ▶ Good for handling porous materials or if leakage is present

Supplied with vacuum gauge and manometer.

Technical data

Description	Unit	Value
Feed pressure, max.	MPa	0.7
Noise level, with silencer	dBA	64-78
Temperature range	°C	-20-80
Weight	g	4100-4600
Material		Al, PPS, NBR, SS

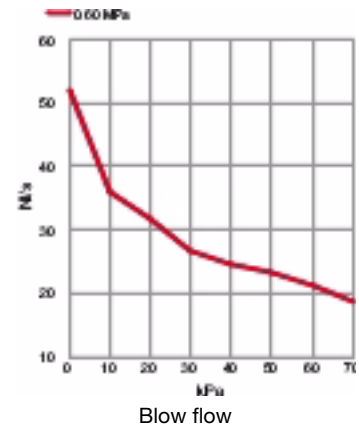
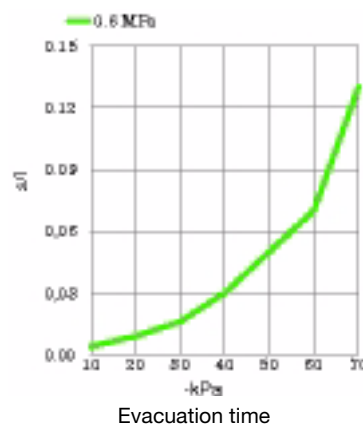
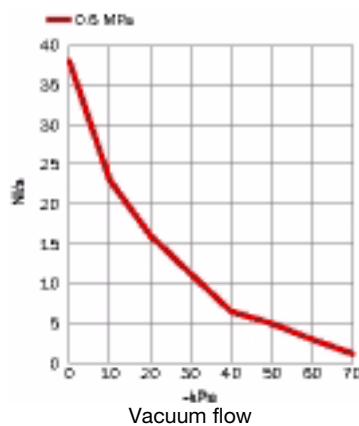
Feed pressure MPa	Air consumption NI/s	Vacuum flow (NI/s) at different vacuum levels (-kPa)										Max vacuum -kPa
		0	10	20	30	40	50	60	70	80	90	
0.60	14.0	38	23.0	16.1	11.2	6.5	4.9	3.0	1.1			75

Evacuation time

Feed pressure MPa	Air consumption NI/s	Evacuation time (s/l) to reach different vacuum levels (-kPa)									Max vacuum -kPa
		10	20	30	40	50	60	70	80	90	
0.60	14.0	0.004	0.009	0.016	0.030	0.050	0.070	0.13			75

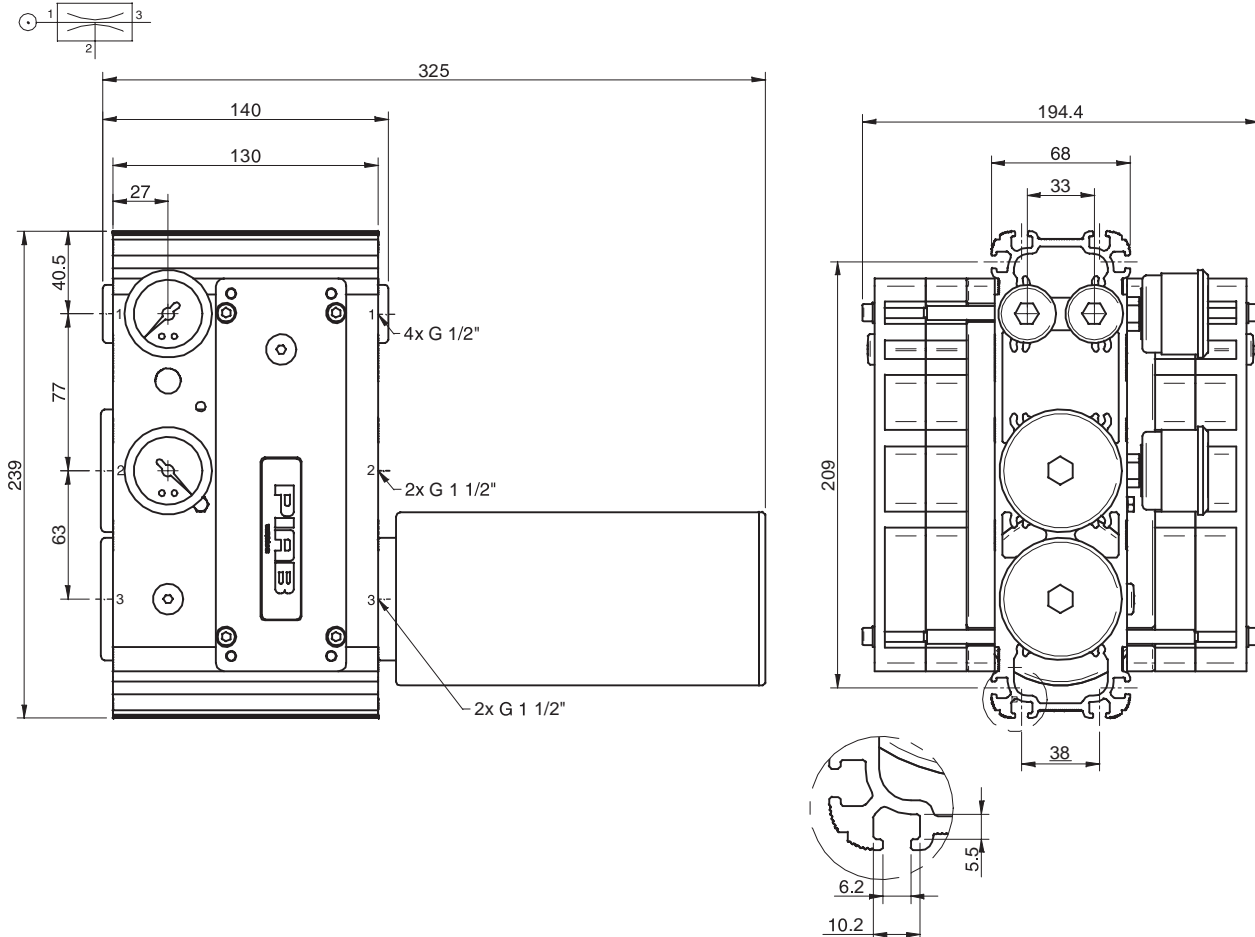
Blow flow

Feed pressure MPa	Air consumption NI/s	Blow flow (NI/s) at different pressure levels (kPa)									Max pressure kPa
		0	10	20	30	40	50	60	70		
0.60	14	52.0	35.9	31.9	26.8	24.5	23.1	21.1	18.5	70	



Ordering information

Description	Art. No.
Vacuum pump CLASSIC MP L200, conn. V, NBR sealings	0103624
Vacuum pump CLASSIC MP L200, conn. V, NBR sealings, complete with mounting brackets and silencer	0104140



Classic MP

Ordering information, accessories

Description	Art. No.
Sealing kit CLASSIC MP, NBR	0104634

For CLASSIC MP 150–240 1x 0104634, for CLASSIC MP 300–480 2x 0104634. The sealing kit includes flap valves, gaskets, compressed-air filters and O-rings.

L300



- ▶ Large vacuum flow
- ▶ Compact size and light weight compared to conventional mechanical pumps
- ▶ Short evacuation time
- ▶ Good for handling porous materials or if leakage is present

Supplied with vacuum gauge and manometer.

Technical data

Description	Unit	Value
Feed pressure, max.	MPa	0.7
Noise level, with silencer	dB(A)	64–78
Temperature range	°C	-20–80
Weight	g	6400–6900
Material		Al, PPS, NBR, SS

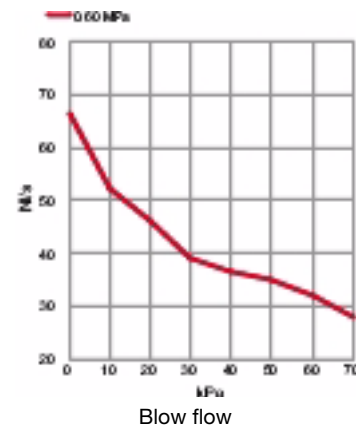
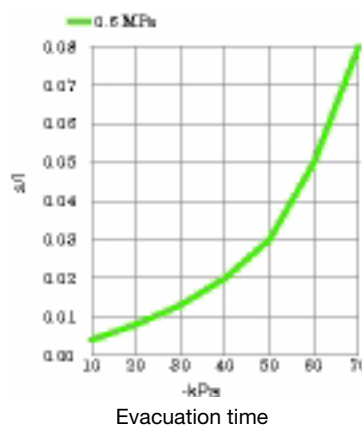
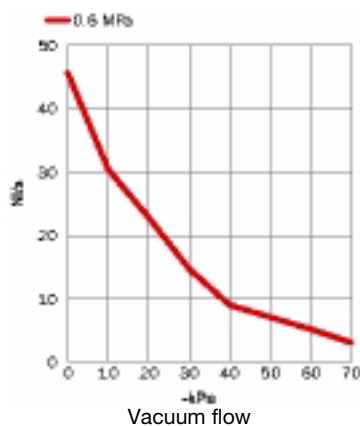
Feed pressure MPa	Air consumption NI/s	Vacuum flow (NI/s) at different vacuum levels (-kPa)										Max vacuum -kPa
		0	10	20	30	40	50	60	70	80	90	
0.60	21.0	46	30	22.8	14.7	9.0	7.1	5.2	3.1			75

Evacuation time

Feed pressure MPa	Air consumption NI/s	Evacuation time (s/l) to reach different vacuum levels (-kPa)									Max vacuum -kPa
		10	20	30	40	50	60	70	80	90	
0.60	21.0	0.004	0.008	0.013	0.020	0.030	0.050	0.080			75

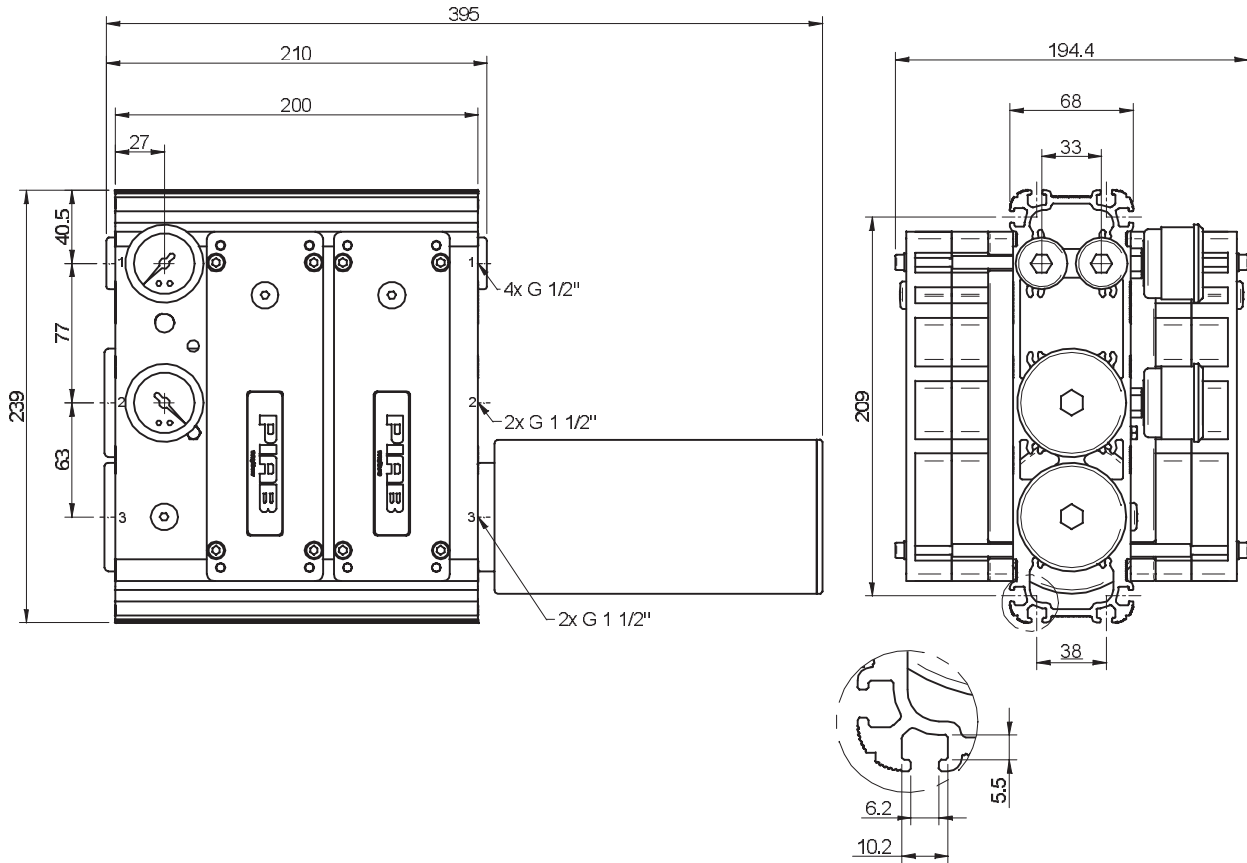
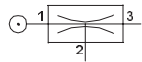
Blow flow

Feed pressure MPa	Air consumption NI/s	Blow flow (NI/s) at different pressure levels (kPa)									Max pressure kPa
		0	10	20	30	40	50	60	70		
0.60	21	66.6	52.4	46.1	39.2	36.7	34.7	31.7	27.7	70	



Ordering information

Description	Art. No.
Vacuum pump CLASSIC MP L300, conn. V, NBR sealings	0103626
Vacuum pump CLASSIC MP L300, conn. V, NBR sealings, complete with mounting brackets and silencer	0104142



Classic MP

Ordering information, accessories

Description	Art. No.
Sealing kit CLASSIC MP, NBR	0104634

For CLASSIC MP 150–240 1x 0104634, for CLASSIC MP 300–480 2x 0104634. The sealing kit includes flap valves, gaskets, compressed-air filters and O-rings.

L400



- ▶ Large vacuum flow
- ▶ Compact size and light weight compared to conventional mechanical pumps
- ▶ Short evacuation time
- ▶ Good for handling porous materials or if leakage is present

Supplied with vacuum gauge and manometer.

Technical data

Description	Unit	Value
Feed pressure, max.	MPa	0.7
Noise level, with silencer	dBA	64–78
Temperature range	°C	-20–80
Weight	g	6400–6900
Material		Al, PPS, NBR, SS

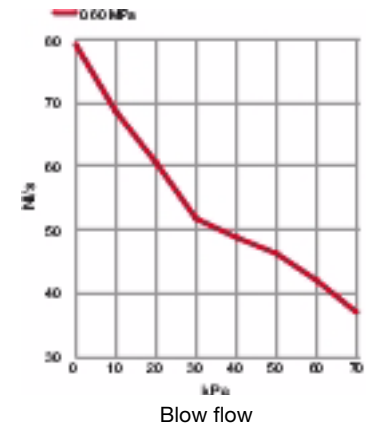
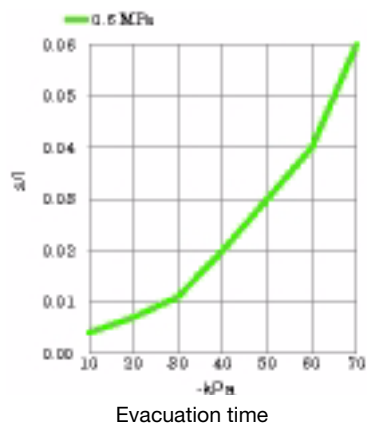
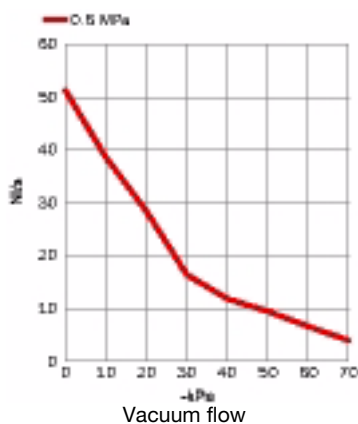
Feed pressure MPa	Air consumption NI/s	Vacuum flow (NI/s) at different vacuum levels (-kPa)										Max vacuum -kPa
		0	10	20	30	40	50	60	70	80	90	
0.60	28	51	39	28	16.4	11.9	9.5	6.7	4			75

Evacuation time

Feed pressure MPa	Air consumption NI/s	Evacuation time (s/l) to reach different vacuum levels (-kPa)									Max vacuum -kPa
		10	20	30	40	50	60	70	80	90	
0.60	28	0.004	0.007	0.011	0.020	0.030	0.040	0.060			75

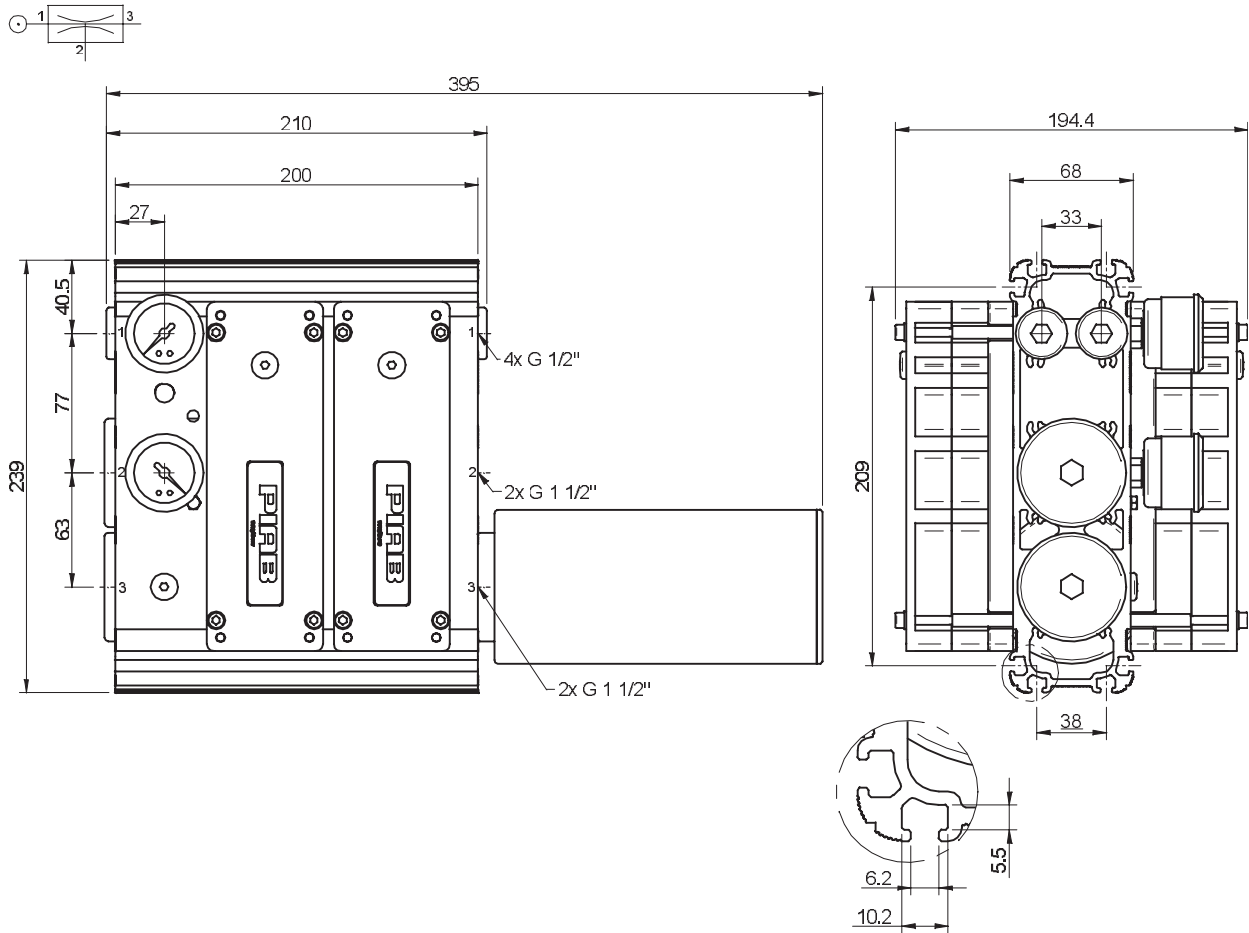
Blow flow

Feed pressure MPa	Air consumption NI/s	Blow flow (NI/s) at different pressure levels (kPa)									Max pressure kPa
		0	10	20	30	40	50	60	70		
0.60	28	79.3	68.7	60.6	51.9	49.0	46.2	42.2	37.0	70	



Ordering information

Description	Art. No.
Vacuum pump CLASSIC MP L400, conn. V, NBR sealings	0103628
Vacuum pump CLASSIC MP L400, conn. V, complete with mounting brackets and silencer	0104144



Classic MP

Ordering information, accessories

Description	Art. No.
Sealing kit CLASSIC MP, NBR	0104634

For CLASSIC MP 150–240 1x 0104634, for CLASSIC MP 300–480 2x 0104634. The sealing kit includes flap valves, gaskets, compressed-air filters and O-rings.

M150L



- ▶ Medium vacuum levels to 91 -kPa
- ▶ Compact size and light weight compared to conventional mechanical pumps
- ▶ Operates at as low as 0.34 MPa
- ▶ Good for applications where little or no leakage is present

Supplied with vacuum gauge and manometer.

Technical data

Description	Unit	Value
Feed pressure, max.	MPa	0.7
Noise level, with silencer	dBA	64-78
Temperature range	°C	-20-80
Weight	g	4100-4600
Material		Al, PPS, NBR, SS

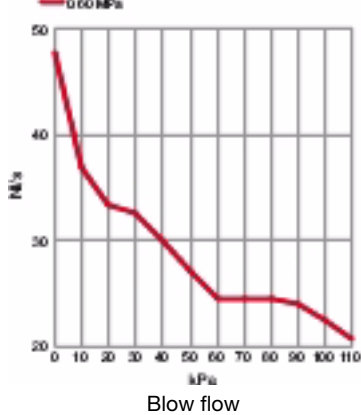
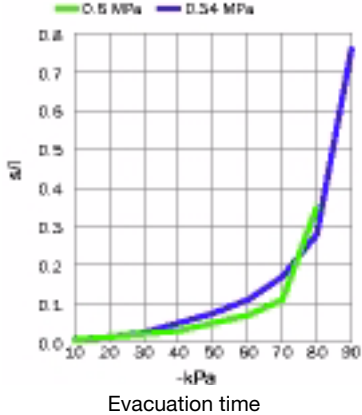
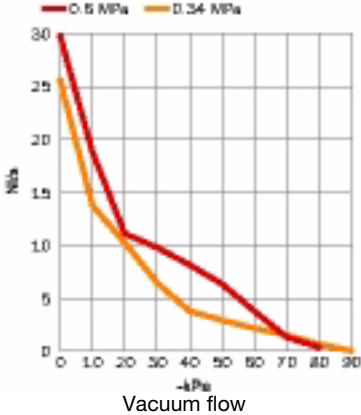
Feed pressure MPa	Air consumption NI/s	Vacuum flow (NI/s) at different vacuum levels (-kPa)										Max vacuum -kPa
		0	10	20	30	40	50	60	70	80	90	
0.60	18.0	30	18.8	11.1	9.8	8.2	6.4	3.8	1.3	0.38		89
0.34	11.3	26	13.8	10.3	6.5	3.8	2.9	2.2	1.5	0.67	0.050	91

Evacuation time

Feed pressure MPa	Air consumption NI/s	Evacuation time (s/l) to reach different vacuum levels (-kPa)										Max vacuum -kPa
		10	20	30	40	50	60	70	80	90		
0.60	18.0	0.006	0.014	0.022	0.030	0.050	0.070	0.11	0.35		89	
0.34	11.3	0.007	0.014	0.025	0.050	0.075	0.11	0.17	0.28	0.76	91	

Blow flow

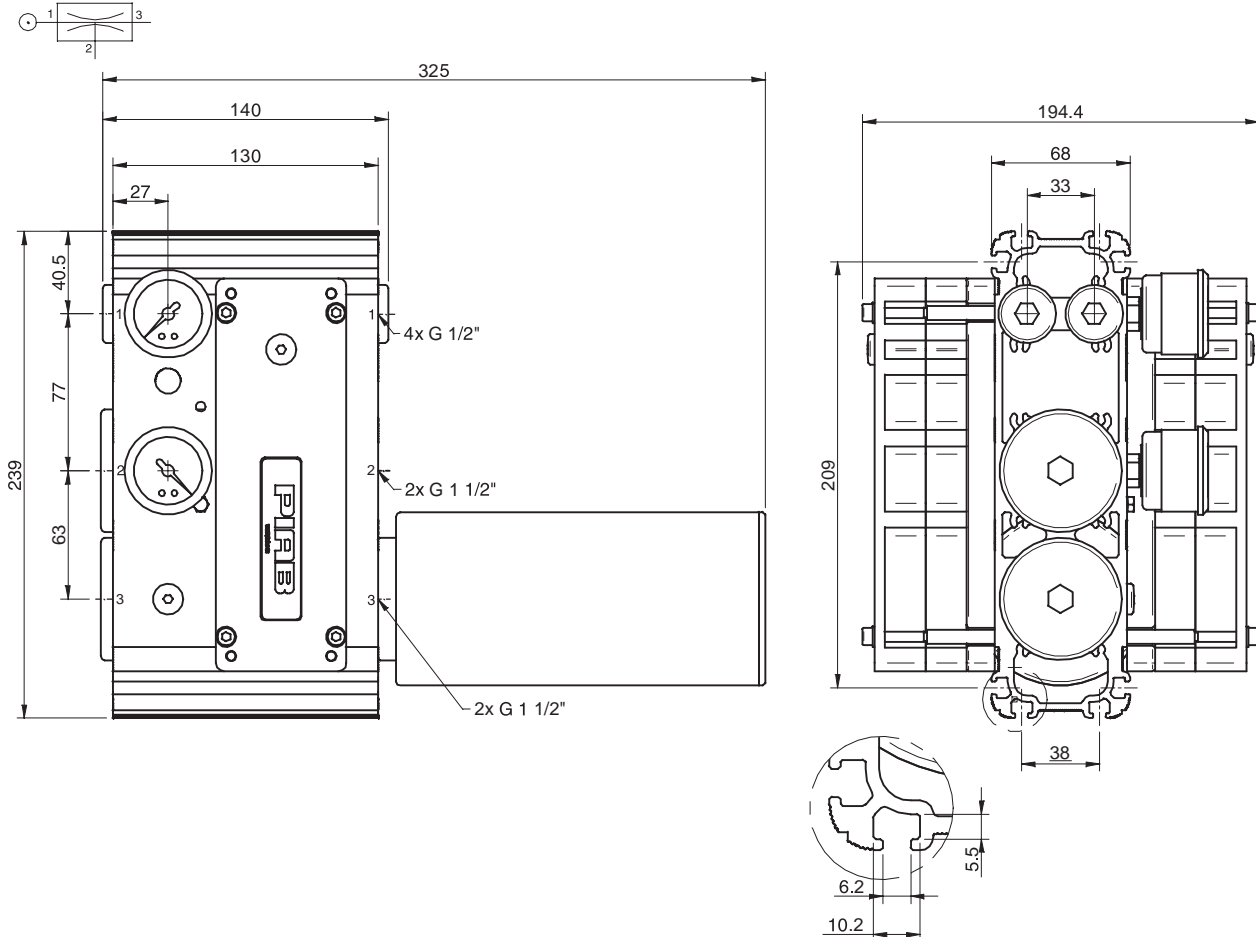
Feed pressure MPa	Air consumption NI/s	Blow flow (NI/s) at different pressure levels (kPa)												Max pressure kPa
		0	10	20	30	40	50	60	70	80	90	100	110	
0.60	18	47.8	36.8	33.2	32.5	29.9	27.0	24.4	24.4	24.4	24.0	22.5	20.7	110



Classic MP

Ordering information

Description	Art. No.
Vacuum pump CLASSIC MP M150L, conn. V, NBR sealings	0103762
Vacuum pump CLASSIC MP M150L, conn. V, NBR sealings, complete with mounting brackets and silencer	0104160



Ordering information, accessories

Description	Art. No.
Sealing kit CLASSIC MP, NBR	0104634

For CLASSIC MP 150–240 1x 0104634, for CLASSIC MP 300–480 2x 0104634. The sealing kit includes flap valves, gaskets, compressed-air filters and O-rings.

M200L



- ▶ Medium vacuum levels to 91 -kPa
- ▶ Compact size and light weight compared to conventional mechanical pumps
- ▶ Operates at as low as 0.34 MPa
- ▶ Good for applications where little or no leakage is present

Supplied with vacuum gauge and manometer.

Technical data

Description	Unit	Value
Feed pressure, max.	MPa	0.7
Noise level, with silencer	dBA	64-78
Temperature range	°C	-20-80
Weight	g	4100-4600
Material		Al, PPS, NBR, SS

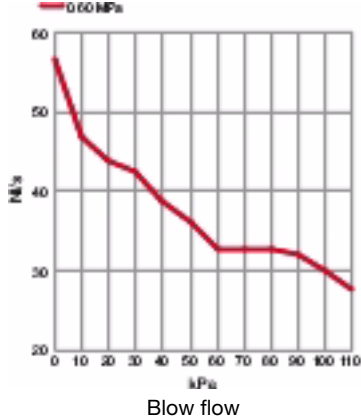
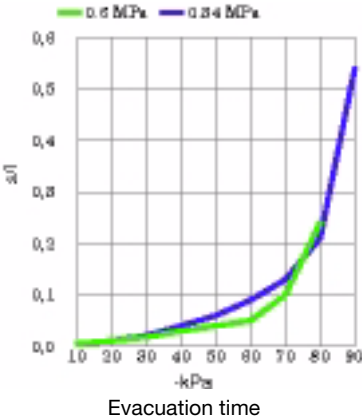
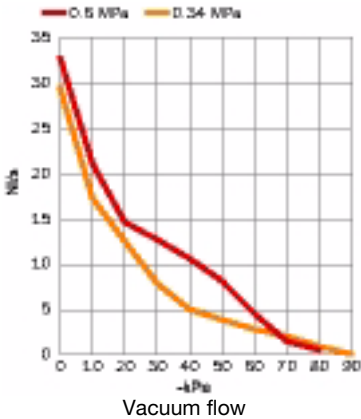
Feed pressure MPa	Air consumption NI/s	Vacuum flow (NI/s) at different vacuum levels (-kPa)											Max vacuum -kPa
		0	10	20	30	40	50	60	70	80	90		
0.60	24.0	33	21.1	14.6	12.7	10.6	8.2	4.6	1.5	0.57			89
0.34	15.1	30	17.3	12.5	7.9	5.0	3.9	2.9	2.1	0.95	0.10		91

Evacuation time

Feed pressure MPa	Air consumption NI/s	Evacuation time (s/l) to reach different vacuum levels (-kPa)										Max vacuum -kPa
		10	20	30	40	50	60	70	80	90		
0.60	24.0	0.005	0.011	0.018	0.030	0.040	0.050	0.10	0.24			89
0.34	15.1	0.005	0.011	0.021	0.040	0.060	0.090	0.13	0.21	0.54		91

Blow flow

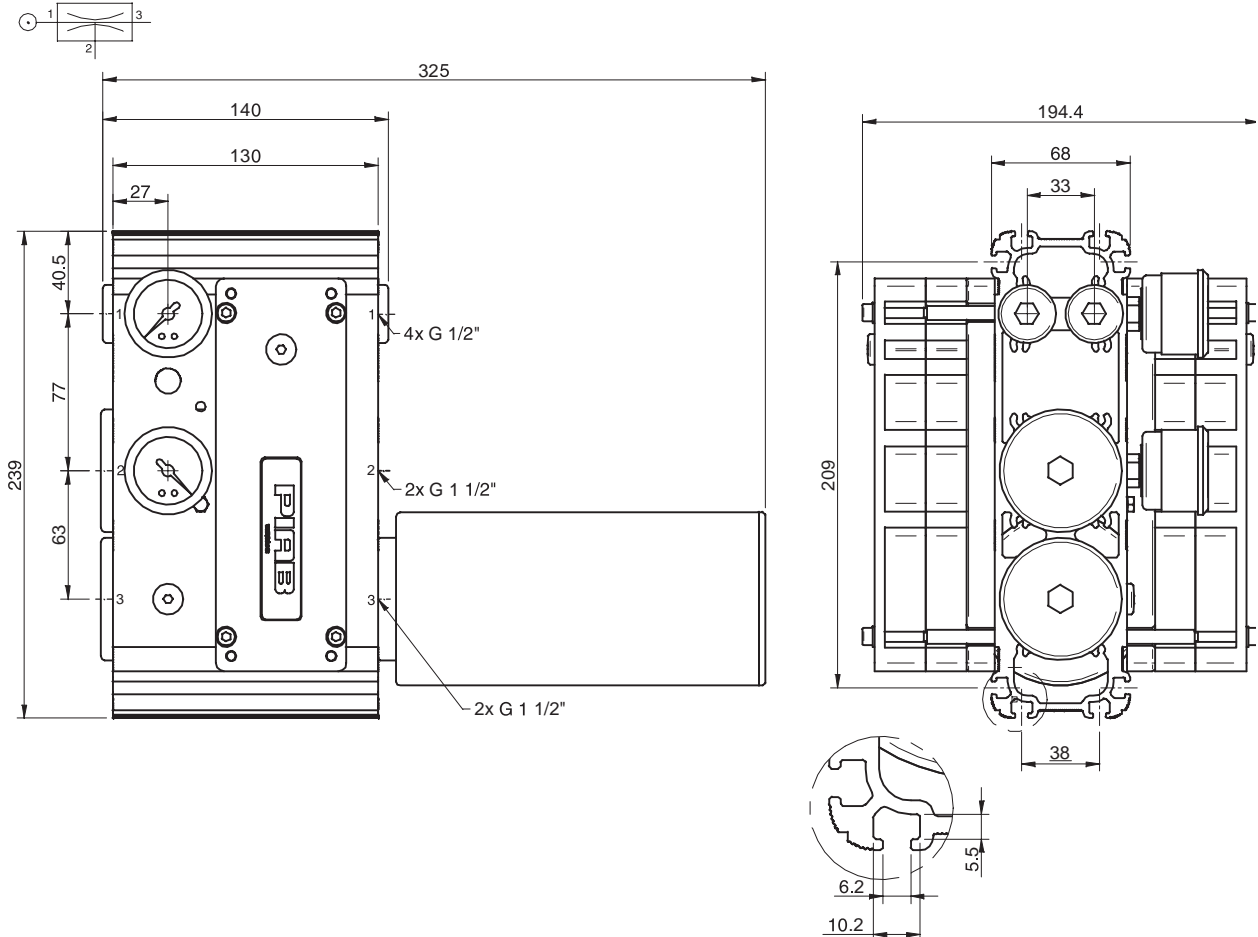
Feed pressure MPa	Air consumption NI/s	Blow flow (NI/s) at different pressure levels (kPa)											Max pressure kPa	
		0	10	20	30	40	50	60	70	80	90	100		110
0.60	24	56.8	46.7	43.9	42.5	38.8	36.0	32.6	32.6	32.6	32.0	30.0	27.6	110



Classic MP

Ordering information

Description	Art. No.
Vacuum pump CLASSIC MP M200L, conn. V, NBR sealings	0103764
Vacuum pump CLASSIC MP M200L, conn. V, NBR sealings, complete with mounting brackets and silencer	0104162



Ordering information, accessories

Description	Art. No.
Sealing kit CLASSIC MP, NBR	0104634

For CLASSIC MP 150–240 1x 0104634, for CLASSIC MP 300–480 2x 0104634. The sealing kit includes flap valves, gaskets, compressed-air filters and O-rings.

M300L



- ▶ Medium vacuum levels to 91 -kPa
- ▶ Compact size and light weight compared to conventional mechanical pumps
- ▶ Operates at as low as 0.34 MPa
- ▶ Good for applications where little or no leakage is present

Supplied with vacuum gauge and manometer.

Technical data

Description	Unit	Value
Feed pressure, max.	MPa	0.7
Noise level, with silencer	dBA	64–78
Temperature range	°C	-20–80
Weight	g	6400–6900
Material		Al, PPS, NBR, SS

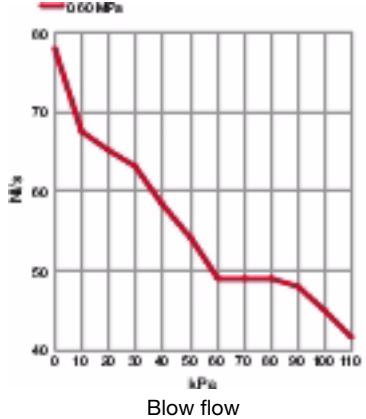
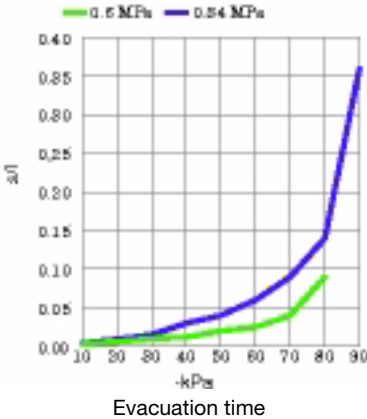
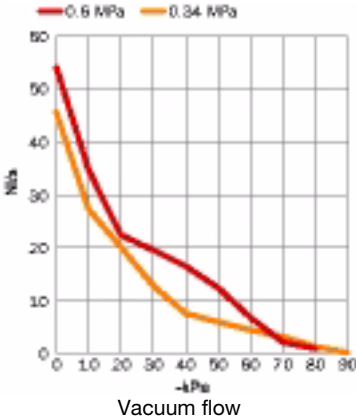
Feed pressure MPa	Air consumption NI/s	Vacuum flow (NI/s) at different vacuum levels (-kPa)										Max vacuum -kPa
		0	10	20	30	40	50	60	70	80	90	
0.60	36	54	35	22.4	19.6	16.5	12.4	6.8	2.2	0.95		89
0.34	22.6	46	27	20.1	12.8	7.6	6.0	4.5	3.2	1.3	0.19	91

Evacuation time

Feed pressure MPa	Air consumption NI/s	Evacuation time (s/l) to reach different vacuum levels (-kPa)									Max vacuum -kPa
		10	20	30	40	50	60	70	80	90	
0.60	36	0.003	0.006	0.010	0.012	0.020	0.025	0.040	0.090		89
0.34	22.6	0.004	0.009	0.015	0.030	0.040	0.060	0.090	0.14	0.36	91

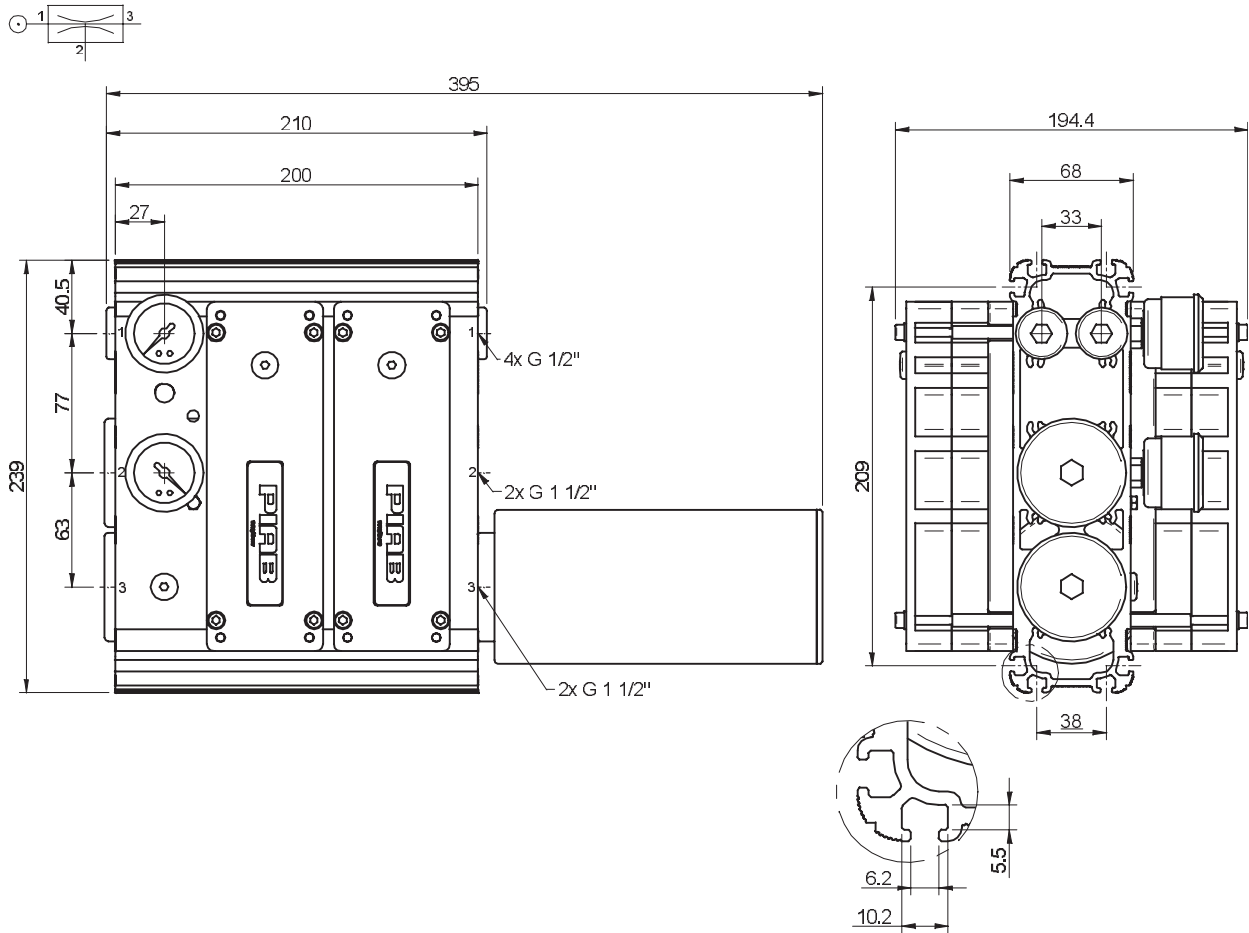
Blow flow

Feed pressure MPa	Air consumption NI/s	Blow flow (NI/s) at different pressure levels (kPa)											Max pressure kPa	
		0	10	20	30	40	50	60	70	80	90	100		110
0.60	36	78.	67.	65.	63.0	58.3	54.0	48.8	48.8	48.8	48.0	45.0	41.4	110
		0	5	1										



Ordering information

Description	Art. No.
Vacuum pump CLASSIC MP M300L, conn. V, NBR sealings	0103766
Vacuum pump CLASSIC MP M300L, conn. V, NBR sealings, complete with mounting brackets and silencer	0104164



Ordering information, accessories

Description	Art. No.
Sealing kit CLASSIC MP, NBR	0104634

For CLASSIC MP 150–240 1x 0104634, for CLASSIC MP 300–480 2x 0104634. The sealing kit includes flap valves, gaskets, compressed-air filters and O-rings.

M400L



- ▶ Medium vacuum levels to 91 -kPa
- ▶ Compact size and light weight compared to conventional mechanical pumps
- ▶ Operates at as low as 0.34 MPa
- ▶ Good for applications where little or no leakage is present

Supplied with vacuum gauge and manometer.

Technical data

Description	Unit	Value
Feed pressure, max.	MPa	0.7
Noise level, with silencer	dBA	64–78
Temperature range	°C	-20–80
Weight	g	6400–6900
Material		Al, PPS, NBR, SS

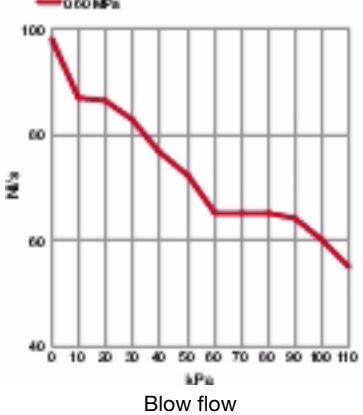
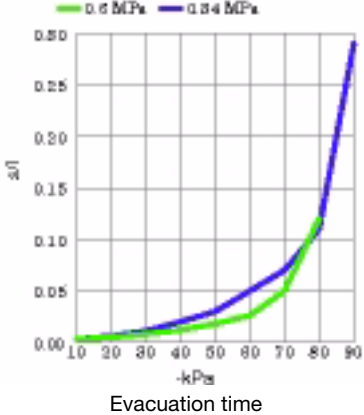
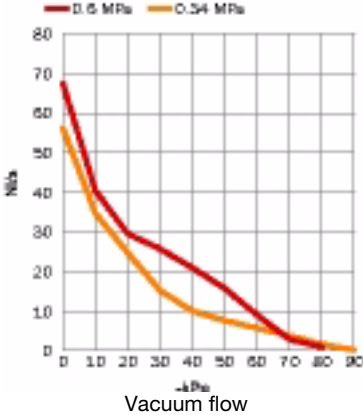
Feed pressure MPa	Air consumption NI/s	Vacuum flow (NI/s) at different vacuum levels (-kPa)											Max vacuum -kPa
		0	10	20	30	40	50	60	70	80	90		
0.60	48	67	40	30	26	20.9	15.7	9.0	2.8	0.95			89
0.34	30	56	35	24.7	15.2	10.0	7.6	5.7	3.8	1.6	0.19		91

Evacuation time

Feed pressure MPa	Air consumption NI/s	Evacuation time (s/l) to reach different vacuum levels (-kPa)										Max vacuum -kPa
		10	20	30	40	50	60	70	80	90		
0.60	48	0.003	0.005	0.008	0.012	0.018	0.026	0.050	0.12			89
0.34	30	0.003	0.006	0.011	0.020	0.030	0.050	0.070	0.11	0.29		91

Blow flow

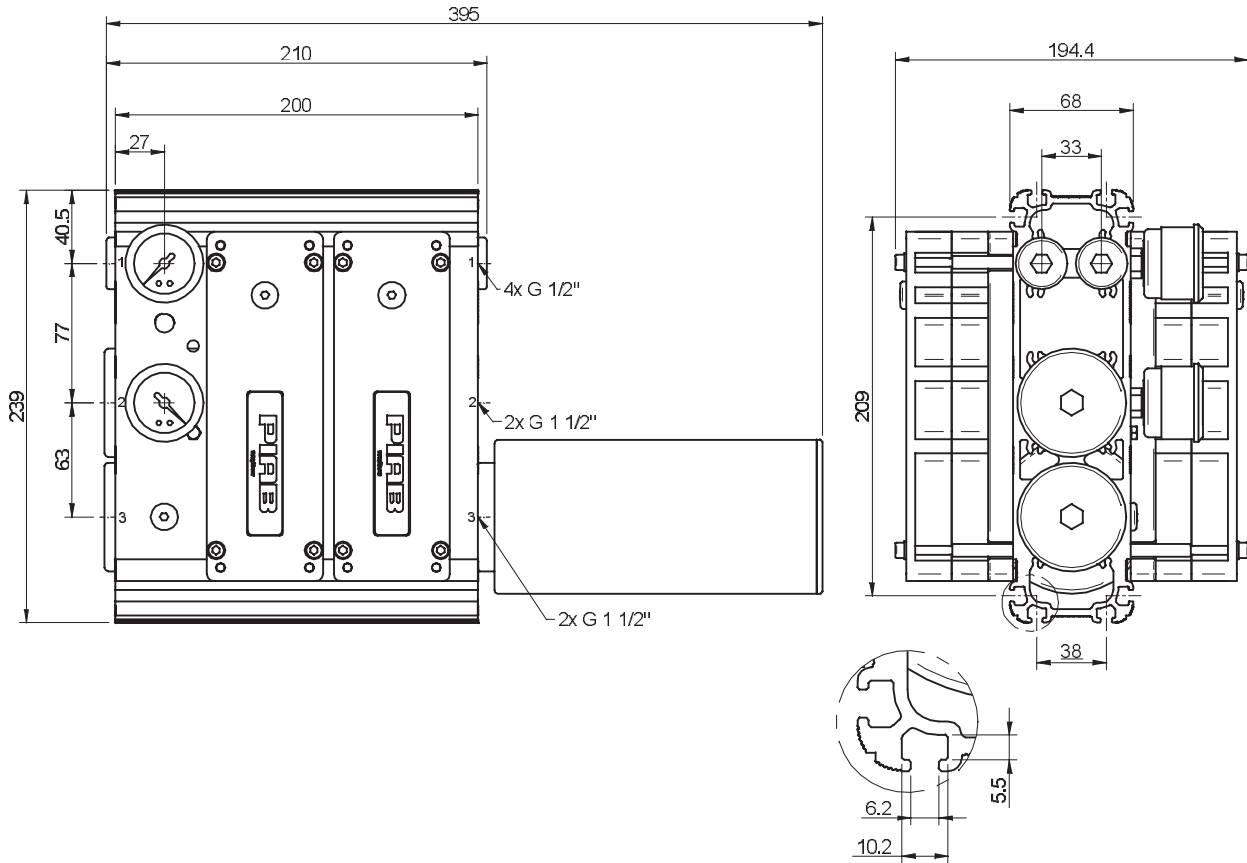
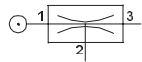
Feed pressure MPa	Air consumption NI/s	Blow flow (NI/s) at different pressure levels (kPa)												Max pressure kPa
		0	10	20	30	40	50	60	70	80	90	100	110	
0.60	48	98.	86.	86.	82.7	76.5	72.0	65.1	65.1	65.1	64.0	60.0	55.2	110
		0	7	1										



Classic MP

Ordering information

Description	Art. No.
Vacuum pump CLASSIC MP M400L, conn. V, NBR sealings	0103768
Vacuum pump CLASSIC MP M400L, conn. V, NBR sealings, complete with mounting brackets and silencer	0104166



Ordering information, accessories

Description	Art. No.
Sealing kit CLASSIC MP, NBR	0104634

For CLASSIC MP 150–240 1x 0104634, for CLASSIC MP 300–480 2x 0104634. The sealing kit includes flap valves, gaskets, compressed-air filters and O-rings.

H240



- ▶ Higher vacuum levels to 100.8 -kPa
- ▶ Use with practically zero leakage present and non-porous applications
- ▶ Compact size and light weight compared to conventional mechanical pumps

Supplied with vacuum gauge and manometer.

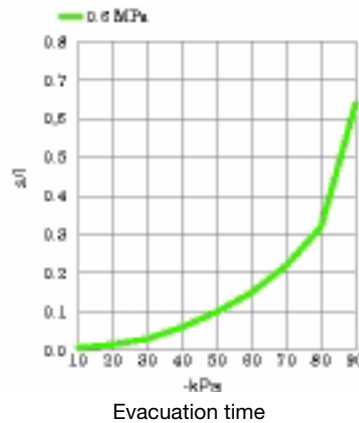
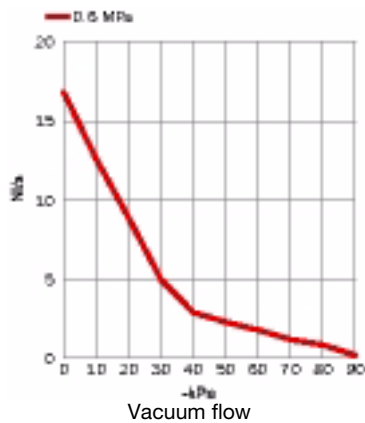
Technical data

Description	Unit	Value
Feed pressure, max.	MPa	0.7
Noise level, with silencer	dBA	64-78
Temperature range	°C	-20-80
Weight	g	4100-4600
Material		Al, PPS, NBR, SS

Feed pressure MPa	Air consumption NI/s	Vacuum flow (NI/s) at different vacuum levels (-kPa)												Max vacuum -kPa
		0	10	20	30	40	50	60	70	80	90	95	99	
0.60	15.2	16.8	12.6	8.9	5.0	2.9	2.3	1.8	1.2	0.86	0.19	0.10	0.020	100.8

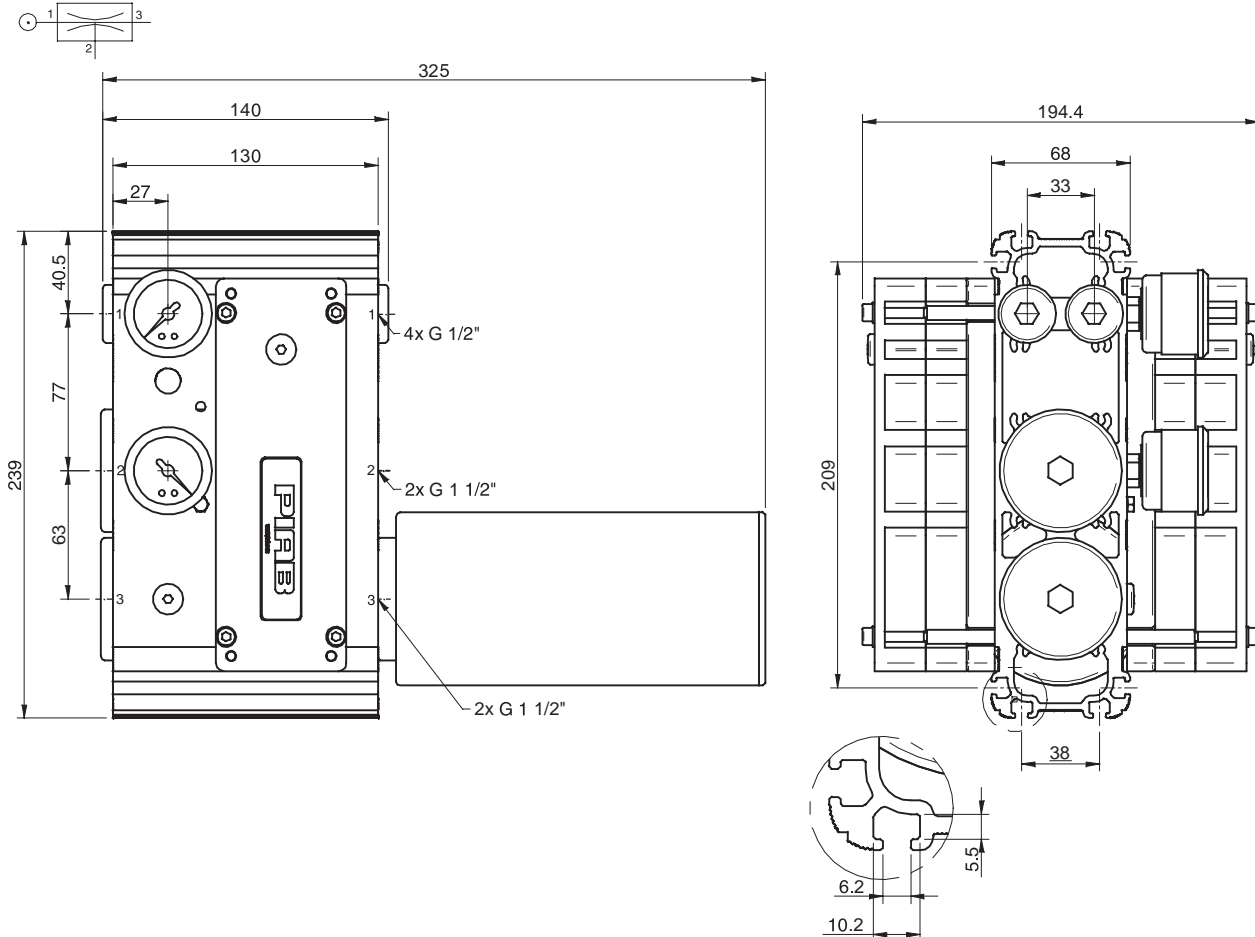
Evacuation time

Feed pressure MPa	Air consumption NI/s	Evacuation time (s/l) to reach different vacuum levels (-kPa)												Max vacuum -kPa
		10	20	30	40	50	60	70	80	90	95	99		
0.60	15.2	0.006	0.015	0.030	0.060	0.10	0.15	0.22	0.32	0.64	1.0	2.0	100.8	



Ordering information

Description	Art. No.
Vacuum pump CLASSIC MP H240, conn. V, NBR sealings	0103640
Vacuum pump CLASSIC MP H240, conn. V, NBR sealings, complete with mounting brackets and silencer	0104156



Classic MP

Ordering information, accessories

Description	Art. No.
Sealing kit CLASSIC MP, NBR	0104634

For CLASSIC MP 150–240 1x 0104634, for CLASSIC MP 300–480 2x 0104634. The sealing kit includes flap valves, gaskets, compressed-air filters and O-rings.

H480



- ▶ Higher vacuum levels to 100.8 -kPa
- ▶ Use with practically zero leakage present and non-porous applications
- ▶ Compact size and light weight compared to conventional mechanical pumps

Supplied with vacuum gauge and manometer.

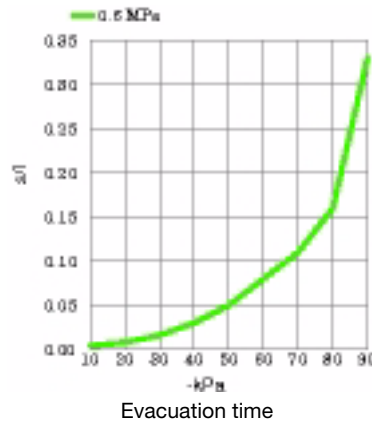
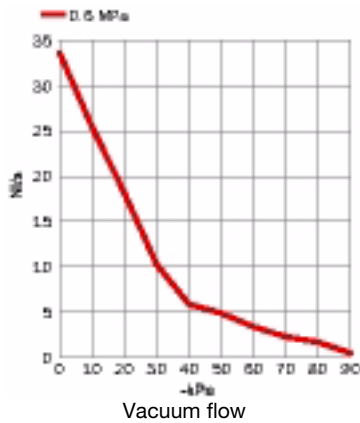
Technical data

Description	Unit	Value
Feed pressure, max.	MPa	0.7
Noise level, with silencer	dB(A)	64-78
Temperature range	°C	-20-80
Weight	g	6400-6900
Material		Al, PPS, NBR, SS

Feed pressure MPa	Air consumption NI/s	Vacuum flow (NI/s) at different vacuum levels (-kPa)												Max vacuum -kPa
		0	10	20	30	40	50	60	70	80	90	95	99	
0.60	30	34	26	18.2	10.3	5.9	4.9	3.4	2.3	1.7	0.48	0.19	0.050	100.8

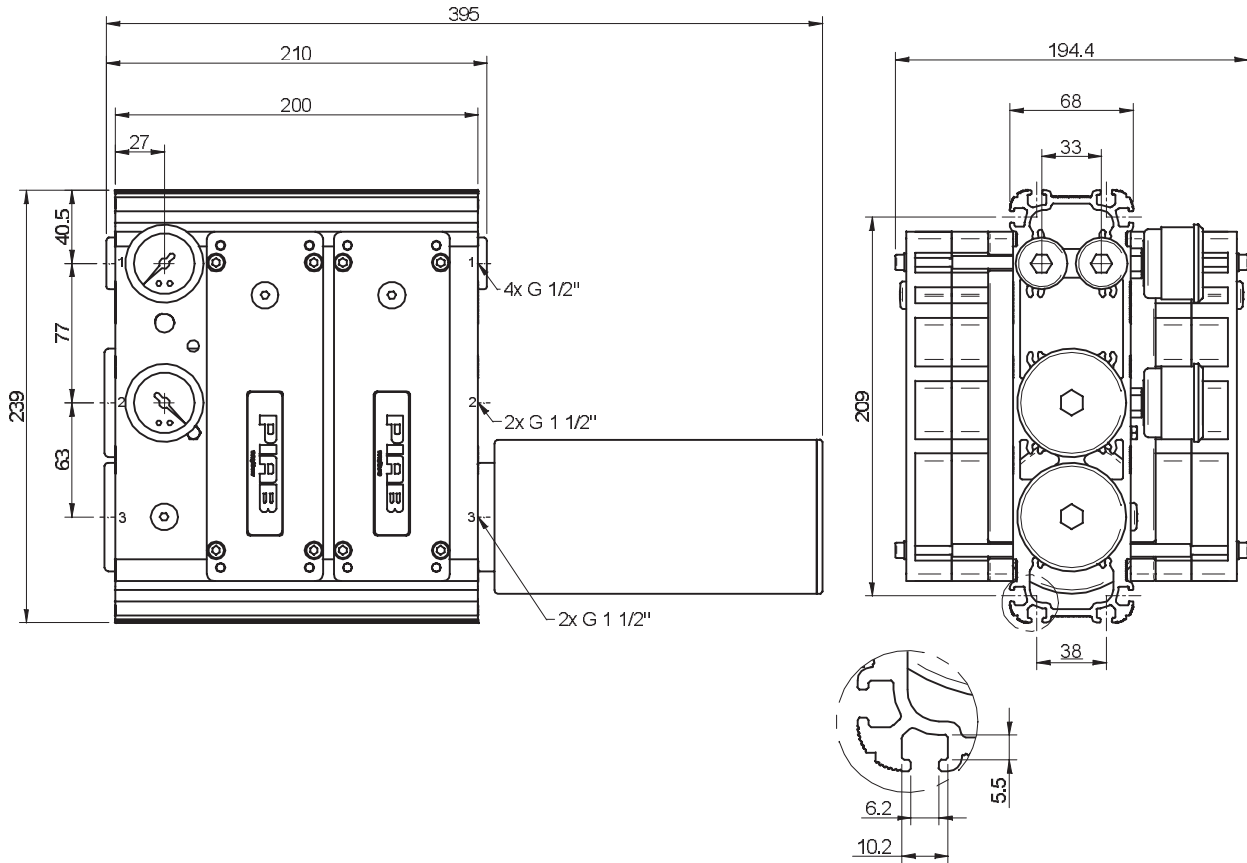
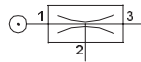
Evacuation time

Feed pressure MPa	Air consumption NI/s	Evacuation time (s/l) to reach different vacuum levels (-kPa)												Max vacuum -kPa
		10	20	30	40	50	60	70	80	90	95	99		
0.60	30	0.004	0.008	0.016	0.030	0.050	0.080	0.11	0.16	0.33	0.52	0.96	100.8	



Ordering information

Description	Art. No.
Vacuum pump CLASSIC MP H480, conn. V, NBR sealings	0103642
Vacuum pump CLASSIC MP H480, conn. V, NBR sealings, complete with mounting brackets and silencer	0104158



Classic MP

Ordering information, accessories

Description	Art. No.
Sealing kit CLASSIC MP, NBR	0104634

For CLASSIC MP 150–240 1x 0104634, for CLASSIC MP 300–480 2x 0104634. The sealing kit includes flap valves, gaskets, compressed-air filters and O-rings.